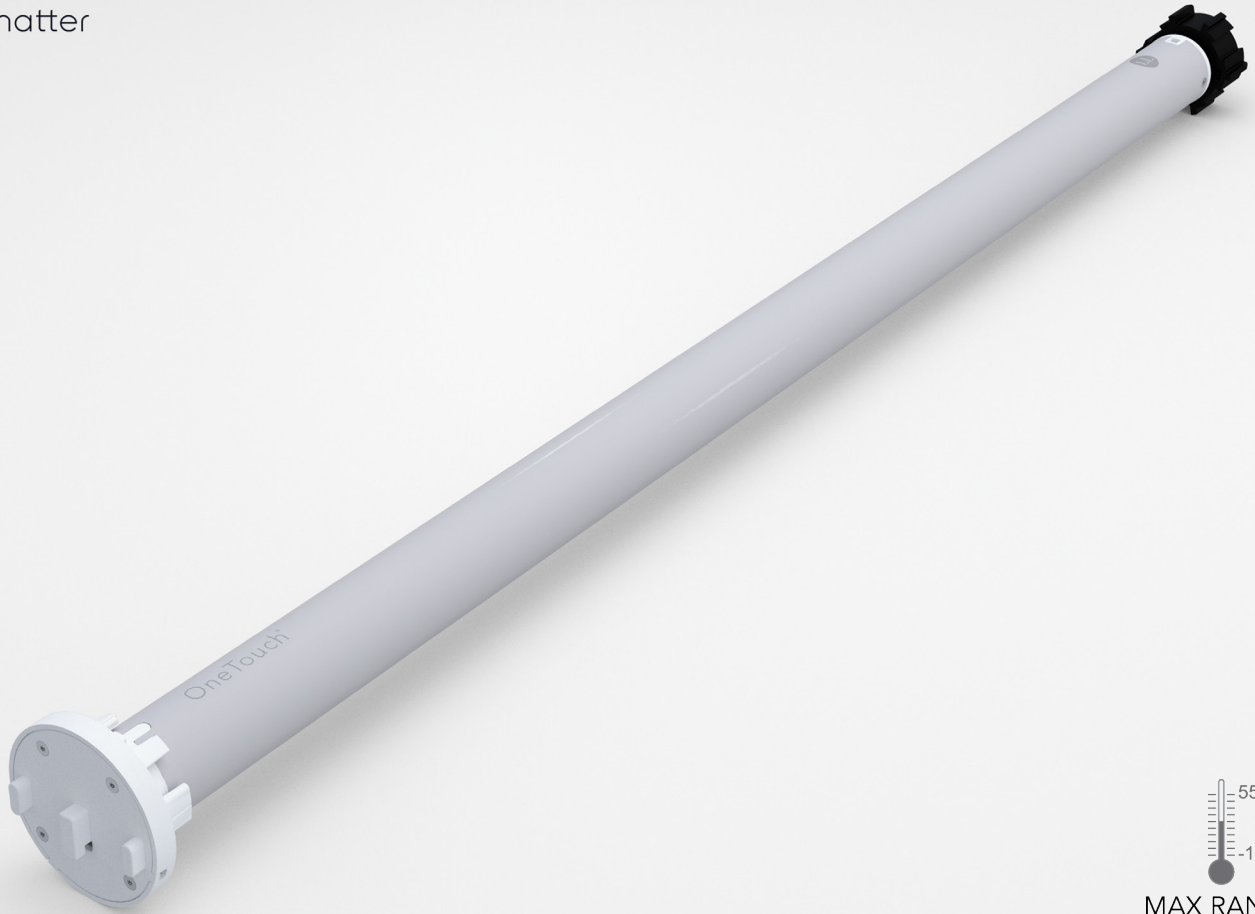


# R2125-DCM RECHARGEABLE MOTOR

## OPERATING INSTRUCTIONS



MAX RANGE

### Motor Information

This motor range is for indoor use only, do not use outdoors or in humid environments.

When a motor has no limits set it will operate in jog mode. Once the blind's top and bottom limits are set this will change to a continuous operation between limit positions.

Each motor can be paired with a maximum of 10 controllers.

Please fully charge motor before first use.

Each motor in this motor range has a rechargeable Li-ion battery with integrated charging management. Max input voltage: 5V/2A.

An LED on the motor head will flash 8 times at the start of operation when the battery is running low.

Do not operate the motor when charging.

When programming the motor, the operator has a 10 second window to complete each stage. If a stage is not carried out within the 10 second window, the motor will automatically exit the current mode and the motor will not be set.

Limits are saved even if the motor runs out of battery or is powered off. Removing any or all remotes does not remove set limits.

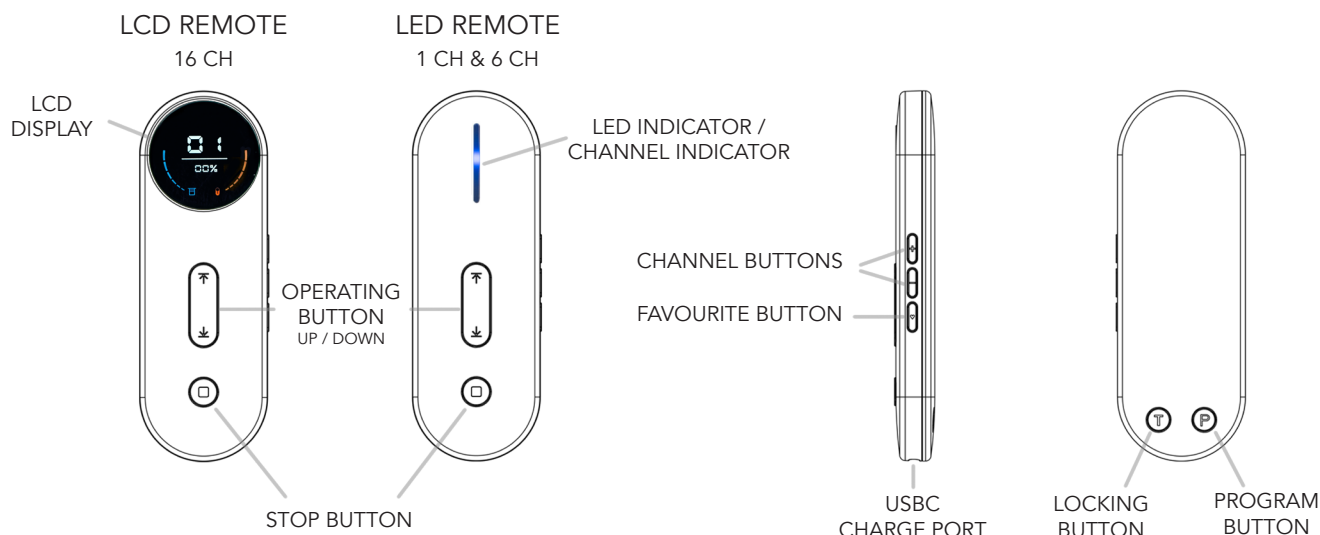
During the setup/programming stage the motor will jog in operation, please do not proceed to the next step until it has completed this function.

A motor's upper and lower limits cannot be set at the same position.

The motor can run for a maximum of 6 minutes continuously.

## Remote Layout

NOTE : The LCD remote screen displays the battery of the blind on the LEFT side and the battery of the remote on the RIGHT side.



## Motor Head Button Operation

### Control Blind - UP, STOP & DOWN

Short press the Motor Head Button. Each press will raise, stop or lower the blind.

### Add/Remove Controller

Press and hold the Motor Head Button for 2 seconds. The blind will jog and flash orange. Press the PROG button on the remote and the blind will jog. Remote is added/removed.

### Direction/Reverse

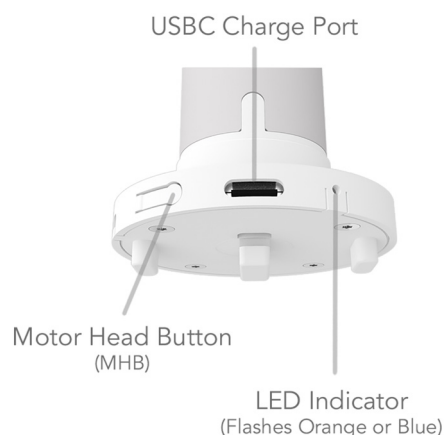
Hold the Motor Head Button for 16 seconds. The motor will jog and flash orange three times. The direction has been reversed.

### Reset

Hold the Motor Head Button for 16 seconds. The motor will jog and flash orange four times. All settings are deleted.

### Smart Hub Connecting

Hold the Motor Head Button for 2 seconds, the blind will jog and flash orange. Then press 3 times within 10 seconds. The motor will flash blue, motor is in pairing mode.



## Power Source & Charging Options

### Attaching the Solar Panel

Make sure the motor has enough charge to operate the blind.

Attach the solar panel to the charge port on the motor.

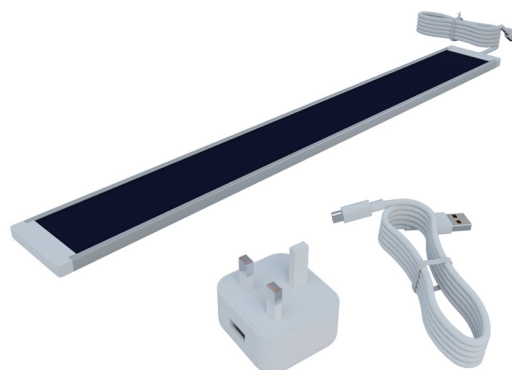
Place/fix the solar panel so that it is facing direct sunlight.

### Built in Lithium Battery Supply

Recharge using USB-C cable provided.

Charge time is between 6 - 8 hours.

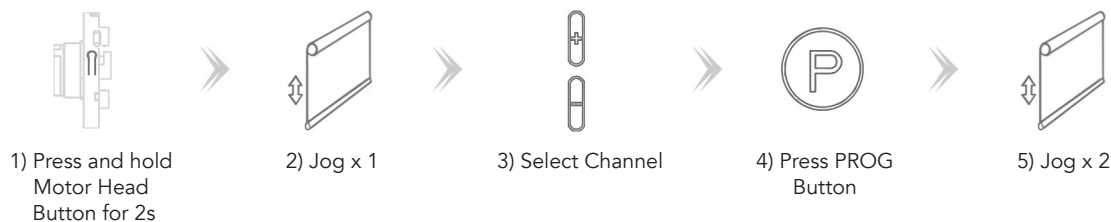
A full charge will last up to 6 months. For the health of the battery we recommend charging at least once every 6 months.



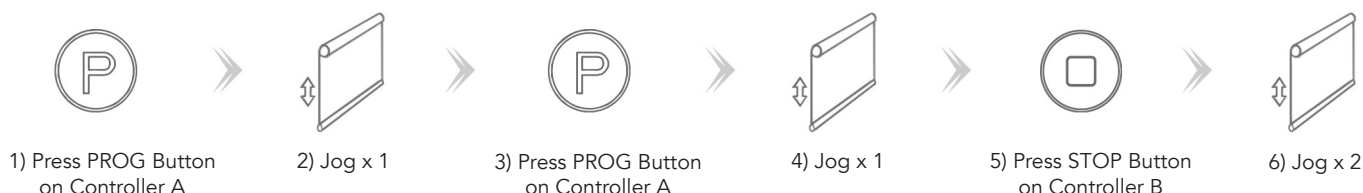
## Adding Controller

NOTE: Pairing can not be done under group channel or 0 channel.

Pairing Controller : Power on the motor and then add the controller



Adding Additional Controller : Add controller B via pre-existing controller A

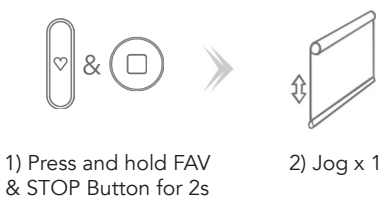


## Direction Reverse

Checking current direction



Option 1 : Changing direction if the limits are not set



Option 2 : Changing direction if the limits are set



## Upper and Lower Limit Setting

NOTE: Before limits are set, the motor will run in jog mode. For continuous operation hold down the UP or DOWN button for 2 seconds. Once limits are set, motor will continuously run between limits. Upper and lower limits are set at the same point.

Setting Upper Limit



Setting Lower Limit



## Jog Mode / Continuous Mode

NOTE: Before limits are set the motor is in jog mode. When in jog mode hold UP or DOWN for continuous operation. Motor cannot be set to continuous mode before limits are set.

Same operation is used to move between both modes



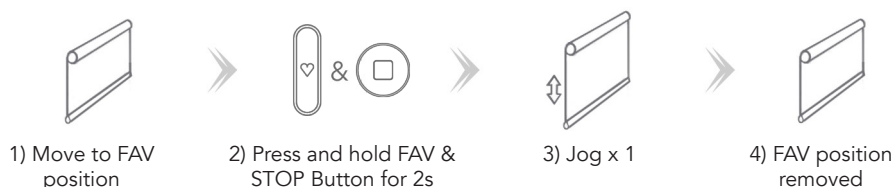
## Setting and Cancelling Favourite Position

NOTE: One Favourite Position per blind

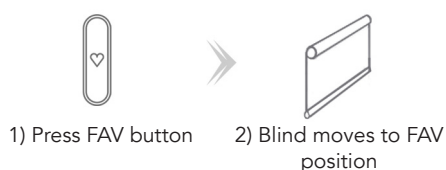
Setting Favourite Position



Cancelling Favourite Position



Hot Key for Favourite Position



## Adjusting Upper and Lower Limits

NOTE: Move to the limit you wish to adjust before starting process. Process has a 4 minute time limit.

Adjusting Upper Limit



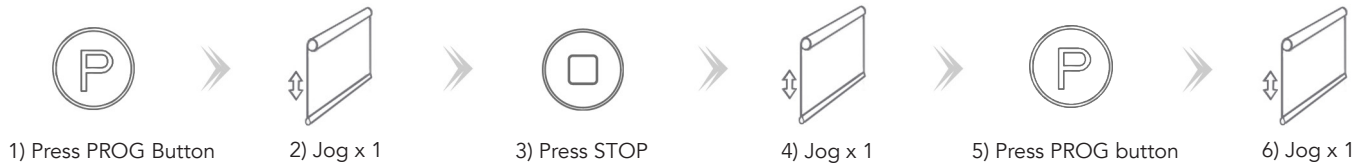
Adjusting Lower Limit



## Remove All Limits

NOTE: Motor limits should be set immediately after installation to protect the blind from damage or misuse.

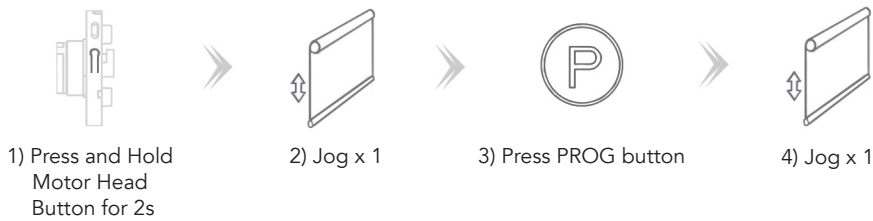
### Removing all set limits



## Remove Controllers

NOTE: Removing controllers does not remove set limits. To use a remote to remove a second remote, both must be paired to motor.

### Remove a Single Controller



### Remove Controller B via Controller A



### Remove All Controllers



## Adjust Motor Speed

NOTE: The motor has 3 speeds. If the motor does not jog at the final stage, the max/min speed has been reached. If the motor is reset it returns to default speed. The Speed of this motor is **20** / 25 / 30 RPM.

### Increase Motor Speed



### Decrease Motor Speed



## Soft Start/Stop NOTE: Soft Start/Stop is on as factory default.

### Turn Soft Stop/Start On



### Turn Soft Stop/Start Off



## Charging Light On/Off

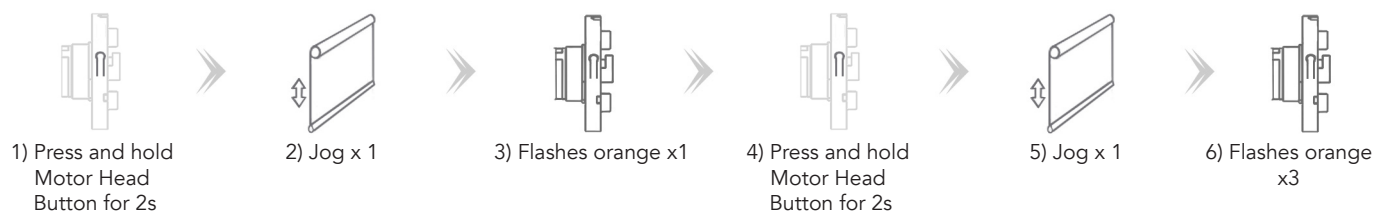
NOTE: When motor is plugged in for charging, a blue LED light will flash 6 times. During charging the blue light flashes 3 times every 8 seconds. When the motor is fully charged the blue LED light will stay on. This function turns the flashing charging light on or off.

### Turn Charging Light On or Off

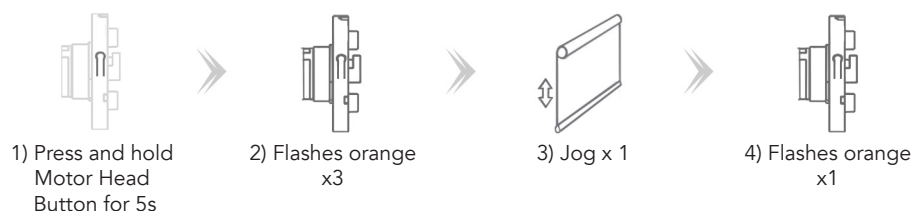


## Sleep Mode NOTE: Motors can be placed in sleep mode to conserve energy.

### Entering Sleep Mode



### Exiting Sleep Mode



## Function Lock

NOTE: When Function Lock is on all setting options are locked for that individual remote. Function lock must be turned off to make any changes to the settings. The LCD remote screen flashes 4 times to show it has changed in or out of locking mode. When operating the LCD remote in locked mode the screen flashes. The LED indicator of the LED remote will flash blue 5 times when moving in or out of locking mode.

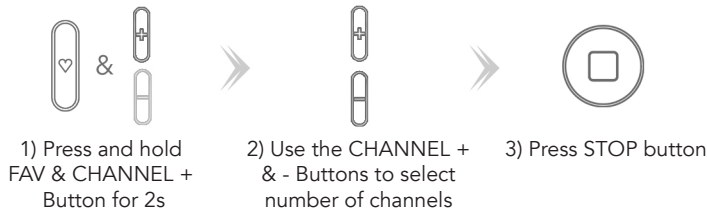
### Turn Function Lock On/Off



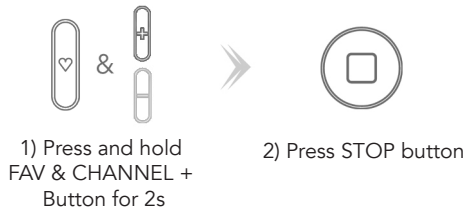
## Channel Locking

NOTE: For use with the 6 and 16 channel controllers. This function limits the accessible channels on the controller.

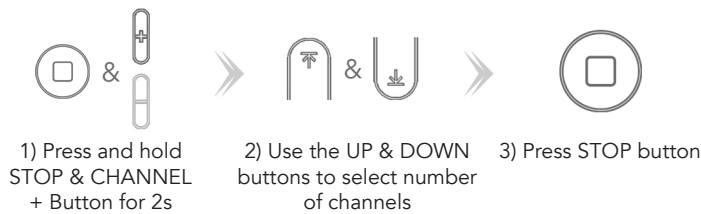
### Channel Locking on 6 Channel Controller



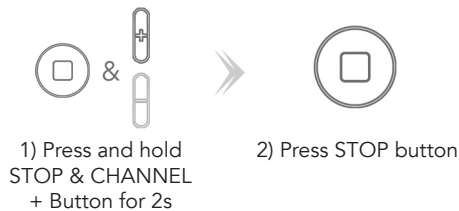
### Channel Unlocking on 6 Channel Controller



### Channel Locking on 16 Channel Controller



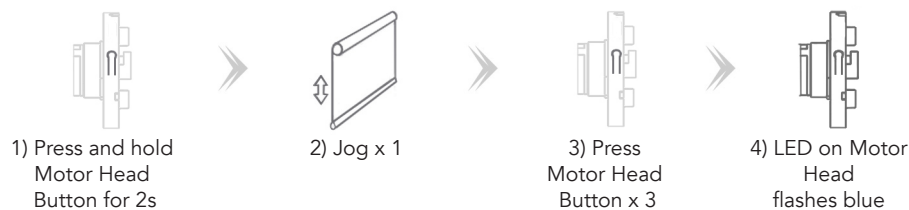
### Channel Unlocking on 16 Channel Controller



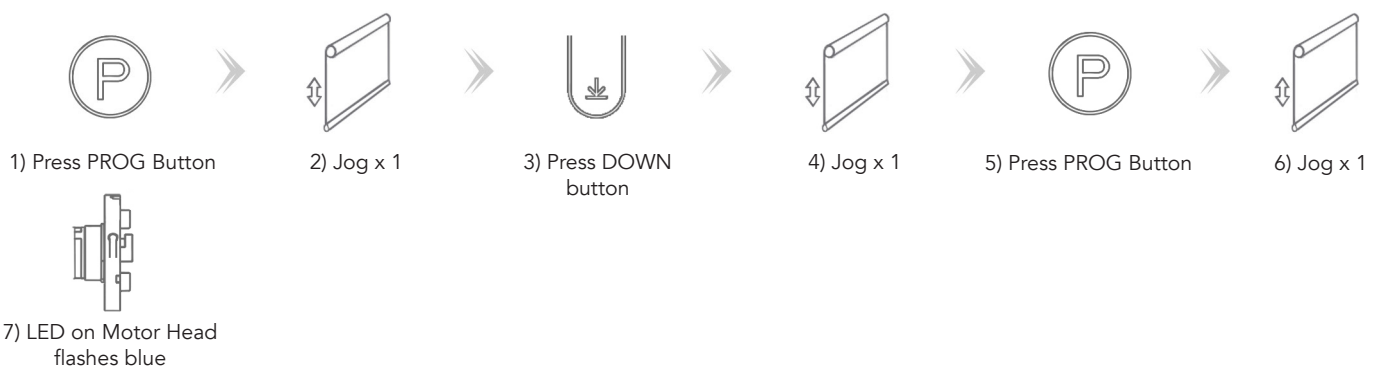
## Smart Hub

NOTE: Enables the user to operate the motor when out of range using the hub. User must have LLOneTouch app installed. These steps will put the motor in the correct mode to connect to the app. See separate APP instructions for full details.

### Option 1: Entering Mode with Motor Head



### Option 2: Entering Mode with Remote





# Matter Connecting

NOTE: Enables the user to operate the motor using a matter device. Example shown is for Apple HomeKit using Apple HomePod. The app used is Home App. The HomePod must be added to the Home App before connecting the motor, please refer to manufacturers instructions. The HomePod device allows the app to control the motors when user is off site. Make sure the phone used is connected to a Wi-Fi 2.4GHz network. Other matter devices are available. These steps will put the motor in the correct mode for connection.

## Option 1: Entering Mode with Motor Head

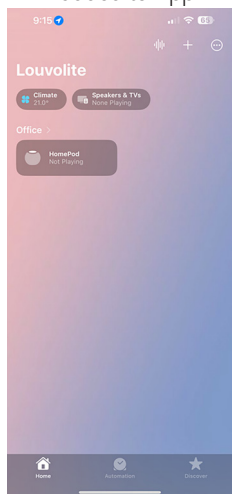
- 1) Press and hold Motor Head Button for 6s
- 2) Jog x 2
- 3) LED on Motor Head flashes orange x 2
- 4) LED on Motor Head flashes blue

## Option 2: Entering Mode with Remote

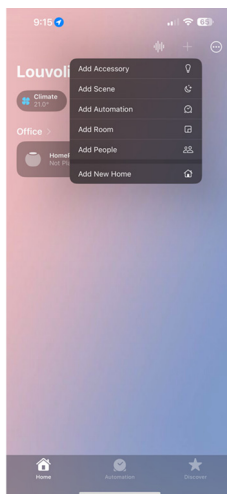
- 1) Press PROG Button
- 2) Jog x 1
- 3) Press DOWN button
- 4) Jog x 1
- 5) Press UP button
- 6) Jog x 1
- 7) LED on Motor Head flashes blue

## Setting App: Example Apple Home App

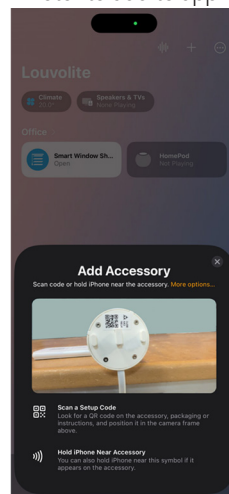
- 1) Open Home App. Have HomePod added to App.



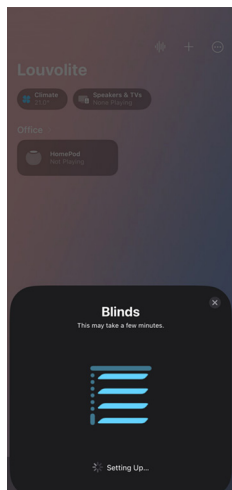
- 2) Click '+' to Add or Scan Accessory.



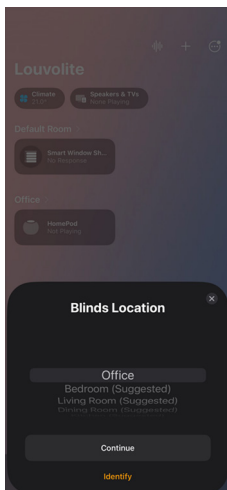
- 3) Scan the unique Setup Code on the motor to add to app.



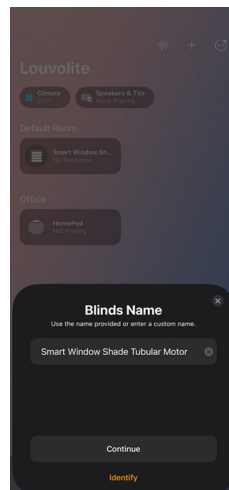
- 4) The app will search for the motor. Blue LED on Motor Head will flash for successful pairing.



- 5) Set the Location of the Blind.

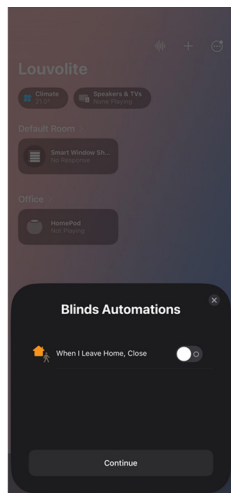


- 6) Set the Name of the Blind.

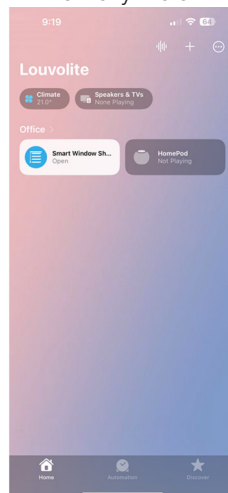




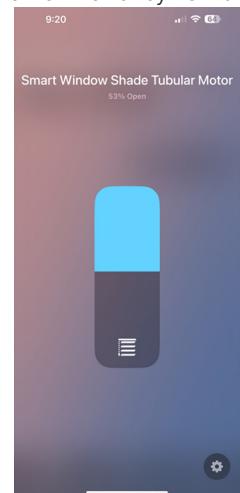
7) Set up Automations.



8) Blinds can now be operated by the app from anywhere.



9) App can visually display the position of your blind when away from the home.



## Troubleshooting

FAULT	CAUSE	SOLUTION
Motor is not responding	<ul style="list-style-type: none"> <li>- Controller not paired</li> <li>- Motor is powered off</li> <li>- Low Battery</li> </ul>	<ul style="list-style-type: none"> <li>- Add Controller</li> <li>- Hold Motor Head Button for 2 seconds to turn on motor</li> <li>- Charge Motor</li> </ul>
Motor stops suddenly	<ul style="list-style-type: none"> <li>- Upper and lower Limits not set correctly</li> <li>- Blind exceeds maximum lifting weight</li> <li>- Low Battery</li> </ul>	<ul style="list-style-type: none"> <li>- Re-set Upper and Lower Limits</li> <li>- Check blind weight</li> <li>- Charge Motor</li> </ul>
LED light flashes 8 times on motor head when motor starts	<ul style="list-style-type: none"> <li>- Low Battery</li> </ul>	<ul style="list-style-type: none"> <li>- Charge Motor</li> </ul>