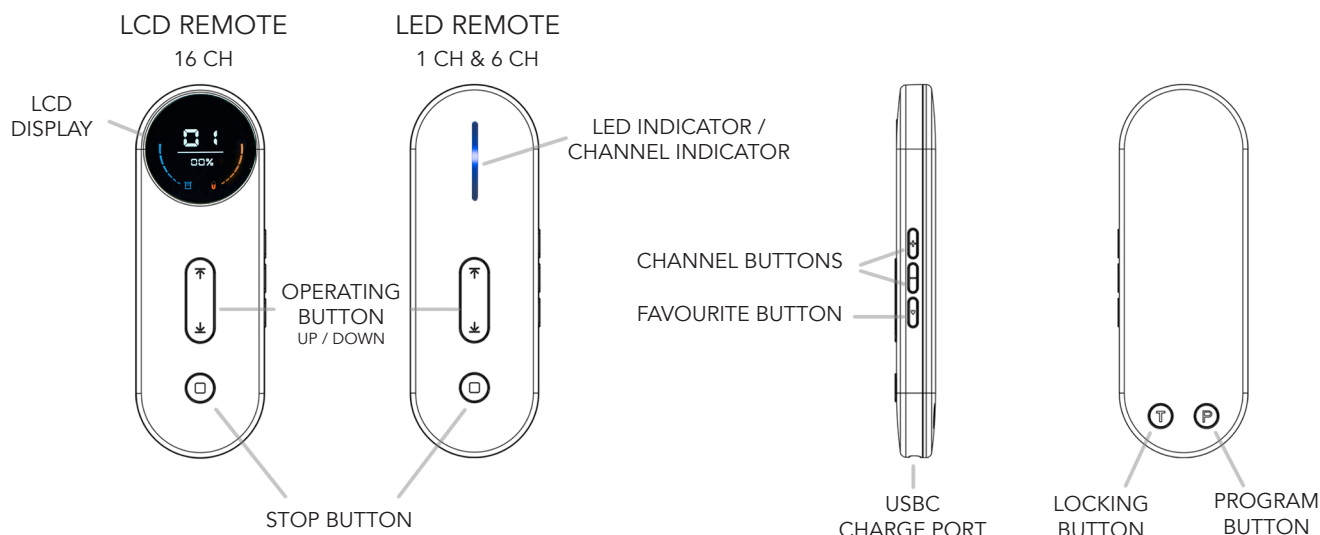


Remote Layout

NOTE : The LCD remote screen displays the battery of the blind on the LEFT side and the battery of the remote on the RIGHT side.



Motor Head Button Operation

Control Blind - UP, STOP & DOWN

Short press the Motor Head Button. Each press will raise, stop or lower the blind.

Add/Remove Controller

Press and hold the Motor Head Button for 2 seconds. The blind will jog and flash orange. Press the PROG button on the remote and the blind will jog. Remote is added/removed.

Bluetooth Connecting

Hold the Motor Head Button for 6 seconds. The motor will jog and flash orange twice. Then it will flash blue. The motor is in Bluetooth mode.

Direction/Reverse

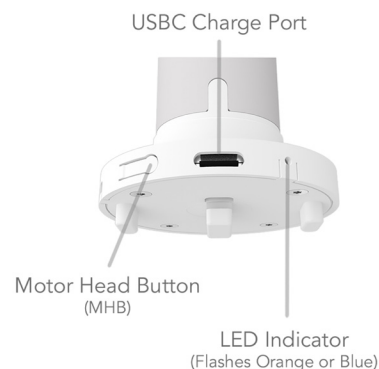
Hold the Motor Head Button for 10 seconds. The motor will jog and flash orange three times. The direction has been reversed.

Reset

Hold the Motor Head Button for 16 seconds. The motor will jog and flash orange four times. All settings are deleted.

Smart Hub Connecting

Hold the Motor Head Button for 2 seconds, the blind will jog and flash orange. Then press 3 times within 10 seconds. The motor will flash blue, motor is in pairing mode.



Power Source & Charging Options

Attaching the Solar Panel

Make sure the motor has enough charge to operate the blind.

Attach the solar panel to the charge port on the motor.

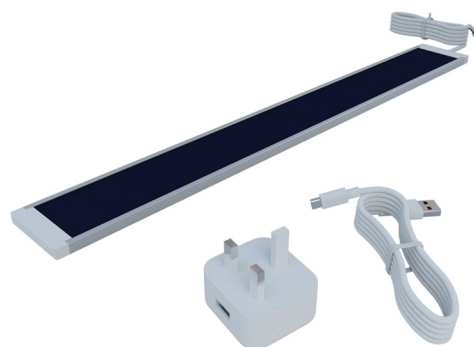
Place / fix the solar panel so that it is facing direct sunlight.

Built in Lithium Battery Supply

Recharge using USB-C cable provided.

Charge time is between 6 - 8 hours.

A full charge will last up to 6 months. For the health of the battery we recommend charging at least once every 6 months.



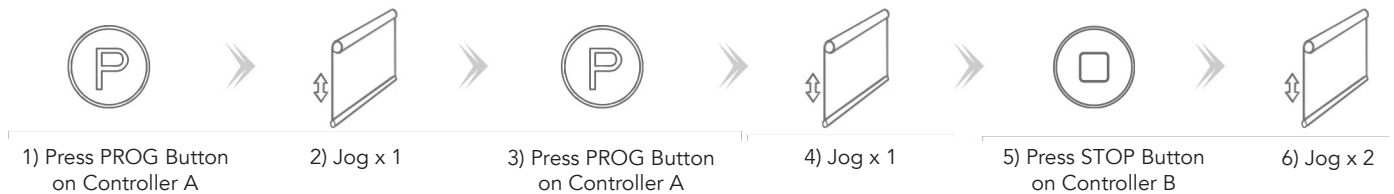
Adding Controller

NOTE: Pairing can not be done under group channel or 0 channel.

Pairing Controller : Power on the motor and then add the controller



Adding Additional Controller : Add controller B via pre-existing controller A

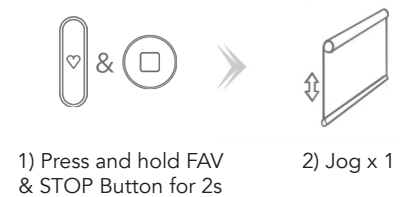


Direction Reverse

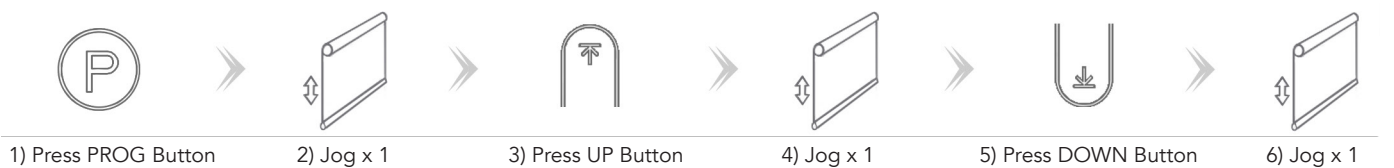
Checking current direction



Option 1 : Changing direction if the limits are not set



Option 2 : Changing direction if the limits are set



Upper and Lower Limit Setting

NOTE: Before limits are set, the motor will run in jog mode. For continuous operation hold down the UP or DOWN button for 2 seconds. Once limits are set, motor will continuously run between limits. Upper and lower limits are set at the same point.

Setting Upper Limit



Setting Lower Limit



Jog Mode / Continuous Mode

NOTE: Before limits are set the motor is in jog mode. When in jog mode hold UP or DOWN for continuous operation. Motor cannot be set to continuous mode before limits are set.

Same operation is used to move between both modes



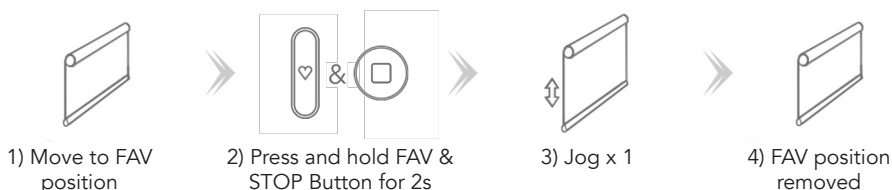
Setting and Cancelling Favourite Position

NOTE: One Favourite Position per blind

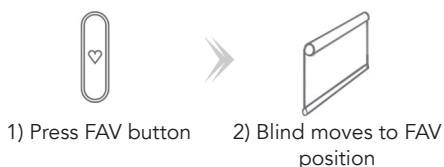
Setting Favourite Position



Cancelling Favourite Position



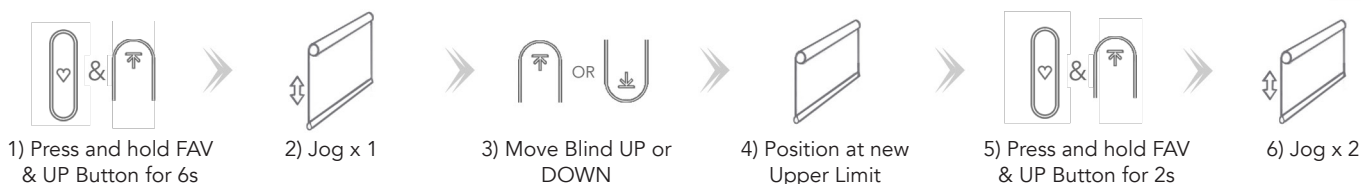
Hot Key for Favourite Position



Adjusting Upper and Lower Limits

NOTE: Move to the limit you wish to adjust before starting process. Process has a 4 minute time limit.

Adjusting Upper Limit



Adjusting Lower Limit



Remove All Limits

NOTE: Motor limits should be set immediately after installation to protect the blind from damage or misuse.

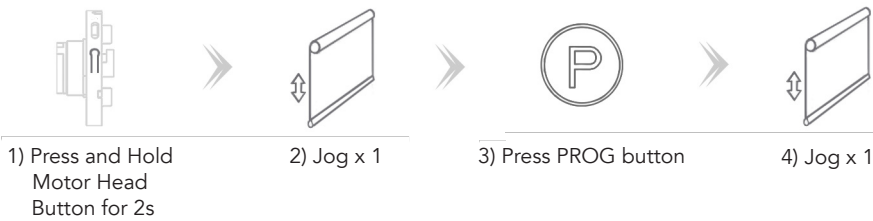
Removing all set limits



Remove Controllers

NOTE: Removing controllers does not remove set limits. To use a remote to remove a second remote, both must be paired to motor.

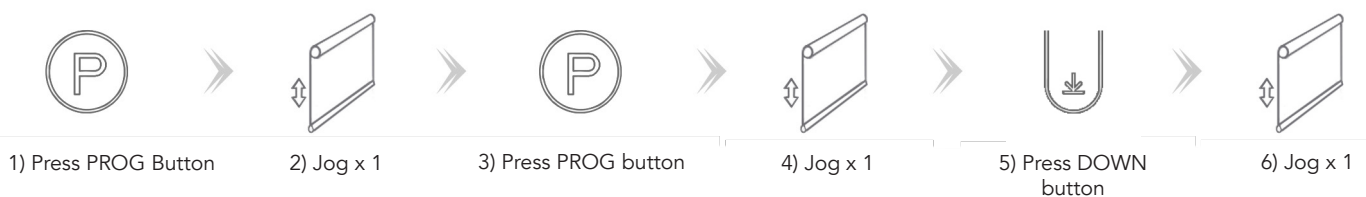
Remove a Single Controller



Remove Controller B via Controller A



Remove All Controllers



Adjust Motor Speed

NOTE: The motor has 3 speeds. If the motor does not jog at the final stage, the max/min speed has been reached. If the motor is reset it returns to default speed. The Speed of this motor is 20 / 25 / 30 RPM.

Increase Motor Speed

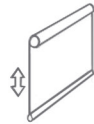
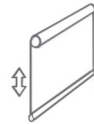
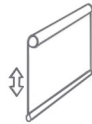


Decrease Motor Speed



Soft Start/Stop NOTE: Soft Start/Stop is on as factory default.

Turn Soft Stop/Start On



1) Press PROG Button

2) Jog x 1

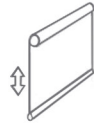
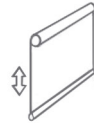
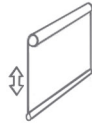
3) Press UP button

4) Jog x 1

5) Press UP button

6) Jog x 1

Turn Soft Stop/Start Off



1) Press PROG Button

2) Jog x 1

3) Press DOWN button

4) Jog x 1

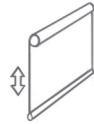
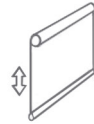
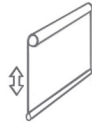
5) Press DOWN button

6) Jog x 1

Charging Light On/Off

NOTE: When motor is plugged in for charging, a blue LED light will flash 6 times. During charging the blue light flashes 3 times every 8 seconds. When the motor is fully charged the blue LED light will stay on. This function turns the flashing charging light on or off.

Turn Charging Light On or Off



1) Press PROG Button

2) Jog x 1

3) Press DOWN button

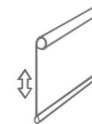
4) Jog x 1

5) Press STOP button

6) Jog x 1

Sleep Mode NOTE: Motors can be placed in sleep mode to conserve energy.

Entering Sleep Mode



1) Press and hold Motor Head Button for 2s

2) Jog x 1

3) Flashes orange x1

4) Press and hold Motor Head Button for 2s

5) Jog x 1

6) Flashes orange x3

Exiting Sleep Mode



1) Press and hold Motor Head Button for 5s

2) Flashes orange x3

3) Jog x 1

4) Flashes orange x1

Function Lock

NOTE: When Function Lock is on all setting options are locked for that individual remote. Function lock must be turned off to make any changes to the settings. The LCD remote screen flashes 4 times to show it has changed in or out of locking mode. When operating the LCD remote in locked mode the screen flashes. The LED indicator of the LED remote will flash blue 5 times when moving in or out of locking mode.

Turn Function Lock On/Off

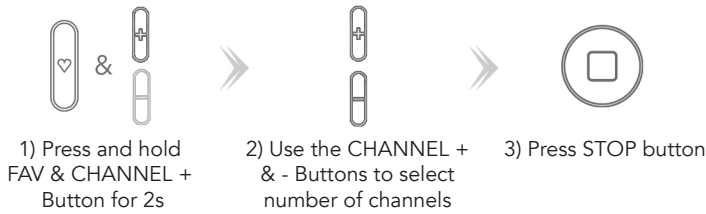


1) Press and hold T Button for 12s

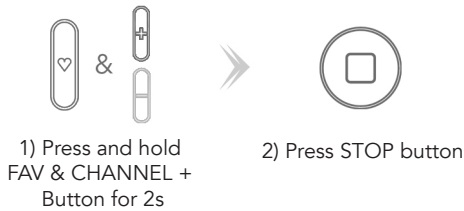
Channel Locking

NOTE: For use with the 6 and 16 channel controllers. This function limits the accessible channels on the controller.

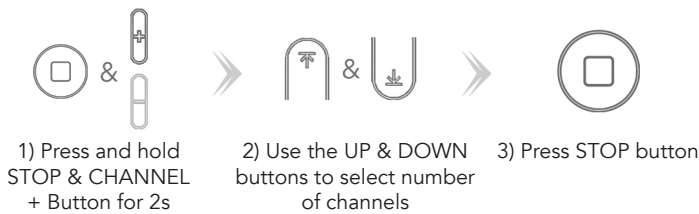
Channel Locking on 6 Channel Controller



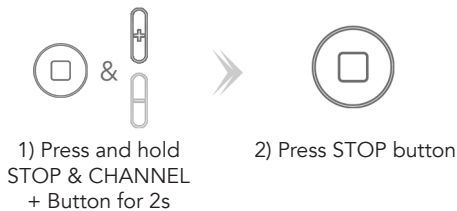
Channel Unlocking on 6 Channel Controller



Channel Locking on 16 Channel Controller



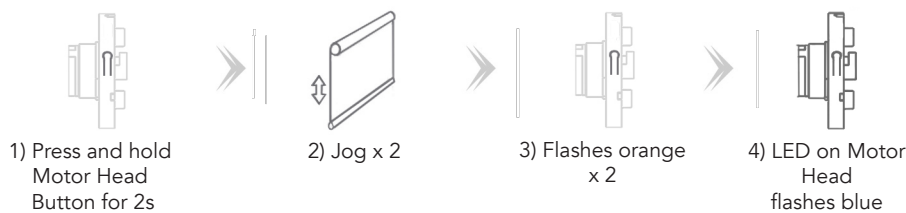
Channel Unlocking on 16 Channel Controller



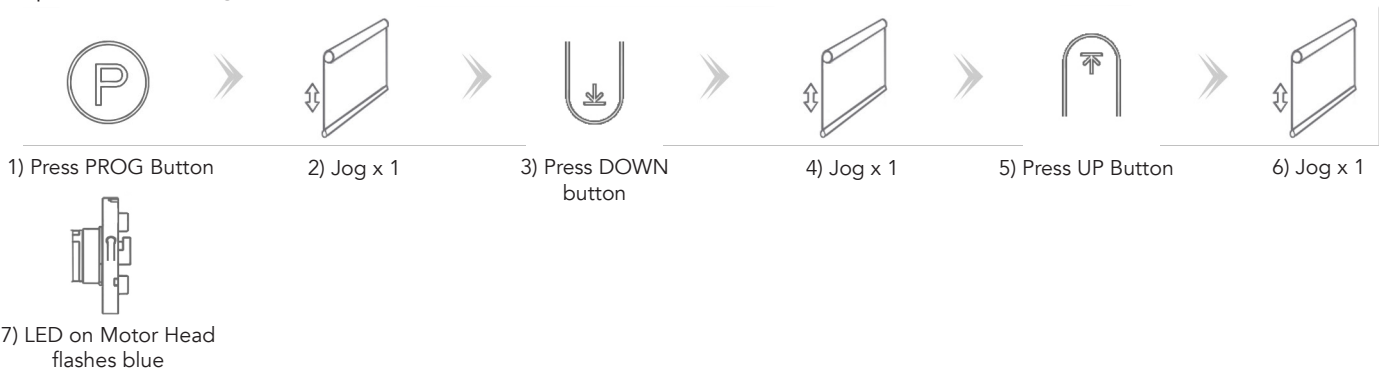
Bluetooth Connection

NOTE: Enables the user to operate the motor when out of range using the hub. User must have LLOneTouch app installed. These steps will put the motor in the correct mode to connect to the app. See separate APP instructions for full details.

Option 1: Entering Mode with Motor Head



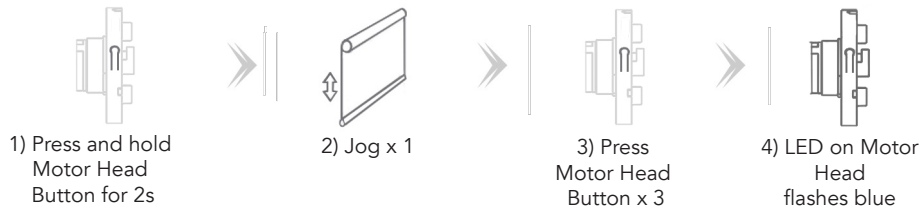
Option 2: Entering Mode with Remote



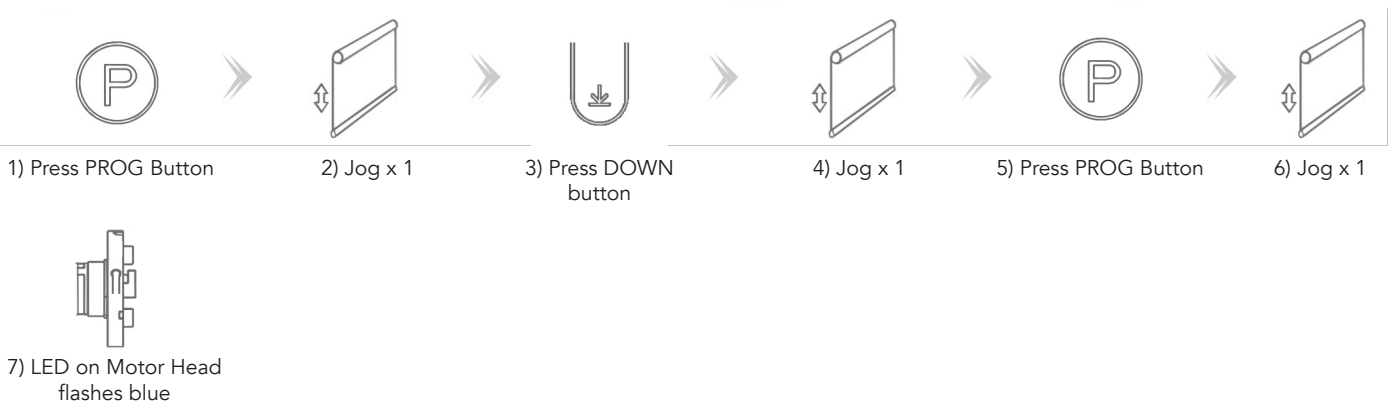
Smart Hub

NOTE: Enables the user to operate the motor when out of range using the hub. User must have LLOneTouch app installed. These steps will put the motor in the correct mode to connect to the app. See separate detailed app instructions for full connection and installation process.

Option 1: Entering Mode with Motor Head



Option 2: Entering Mode with Remote



Troubleshooting

FAULT	CAUSE	SOLUTION
Motor is not responding	<ul style="list-style-type: none"> - Controller not paired - Motor is powered off - Low Battery 	<ul style="list-style-type: none"> - Add Controller - Hold Motor Head Button for 2 seconds to turn on motor - Charge Motor
Motor stops suddenly	<ul style="list-style-type: none"> - Upper and lower Limits not set correctly - Blind exceeds maximum lifting weight - Low Battery 	<ul style="list-style-type: none"> - Re-set Upper and Lower Limits - Check blind weight - Charge Motor
LED light flashes 8 times on motor head when motor starts	<ul style="list-style-type: none"> - Low Battery 	<ul style="list-style-type: none"> - Charge Motor